

Installation Instructions for the Pad Mate® Universal Keypad Repair Membrane by Barclay Enterprises, Inc.

Check out our how-to video:

www.barclayent.com/universal.htm

Tools Needed:

- Phillips head screwdriver #2 head
- Small flathead screwdriver
- Standard rubbing alcohol
- 2 soft cleaning rags (one for cleaning, one to lay the phone on).



IMPORTANT NOTE : READ BEFORE PROCEEDING

The **Pad Mate®** was originally manufactured for certain Panasonic cordless phones, but we've found that it works on many other cordless brands. **When properly installed**, the **Pad Mate®** will not harm your handset. However:

- If you do not install it properly, there is potential for shorting. (See Step 6.)
 - You are responsible for figuring out how to open your handset. The tips we provide here are for illustration purposes only.
 - We strongly recommend you watch our video for details. www.barclayent.com/universal.htm

WE ARE NOT RESPONSIBLE FOR CONSEQUENTIAL DAMAGE TO YOUR DEVICE.

Step 1 To disassemble your phone, begin by removing the battery cover, exposing the bottom housing screws.



Step 2 Remove these screws, and very carefully slide your flathead screwdriver down the length of the phone, applying enough pressure to pop free the clips holding the phone together. It is important to be careful and patient.



Step 3 Once opened, remove the screws holding down the charging contacts. Place them in a fashion where you will be able to recall which contact goes where, to make reassembling your phone easier. Next, remove the final antenna screw, and carefully lift and fold back your now exposed circuit board, making sure to not damage or disconnect any wires.

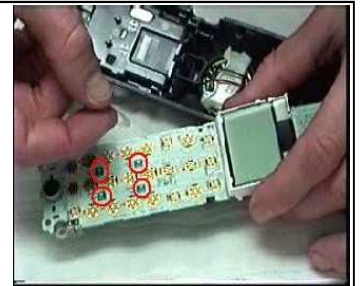


Step 4 Trim the Pad Mate®. Be sure to cut lengthwise, rather than across the contact, as this will provide you with more adhesive surface to bind the contacts your board. Cut the pad into three strips, then into individual contacts. **We recommend you cut enough to install on ALL your touch tone buttons, and your most commonly used buttons, such as On/Off, Hold, Speaker, etc.**



Step 5 Clean the circuit board and keypad with alcohol until you can take your bare finger and touch the contact area and not feel any sticky residue. If the grime is thick and built up you can apply liberal amounts of alcohol to the contact area and let it sit for a minute or two to loosen up.

Step 6 Install the clear, round plastic insulators that we provide onto the circuit board contacts that you intend to apply the Pad Mate® to. Carefully center an insulator over each contact on the circuit board, paying close attention to not apply over the small LED lights that provide illumination to your tone pad. Circuit boards have small solder joints and trace eyelets that, if not properly insulated, can cause problems if a Pad Mate contact touches them. If you see a solder joint or trace eyelet within the open area of an insulator, reposition the insulator or apply a small piece of tape to cover it. However, **do not skip this step** even if there are no problematic solder joints or trace eyelets. **Finish applying all insulators before moving forward.**



Step 7 Now comes trimming each Pad Mate® contact so as to minimize overlap on both your LED lights and nearby contact points on the circuit board. Carefully trim a circle around each Pad Mate® contact, making sure to leave enough adhesive surface to hold against the insulators. Watch the video, as it is a good example of how much should be left.



Once you've trimmed all your contacts, remove the 3M adhesive backing, and begin to very carefully position these over your pre-placed insulators. The adhesive surface should not extend beyond the insulator. Finish placing the rest as you did the first, again, making sure to not cover the LED lights.



Step 8 That's it! Reassemble your cordless phone, making sure your tonepad, rubber headset plug, and if applicable, all other buttons are in place. Carefully flip the circuit board back over, and fasten the antenna screw. Next, return your charging contacts to their correct places. (This will be much easier if you remember in which order you removed them). Once your board is secured, fasten the back housing to the front, which is done by simply tucking the wires back into the phone and applying light pressure back to the fasteners. They will click in on their own. Lastly, return the final screws to the back of the battery compartment, and install your battery and battery cover. **If you have problems after installation, see our Troubleshooting Guide at: www.barclayent.com/universal.htm**